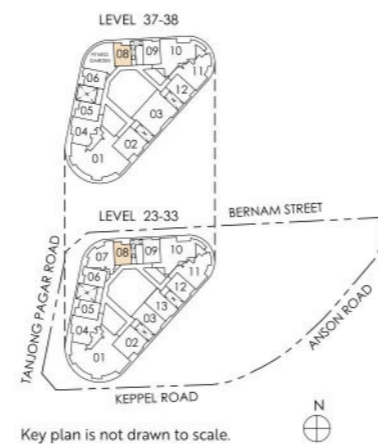
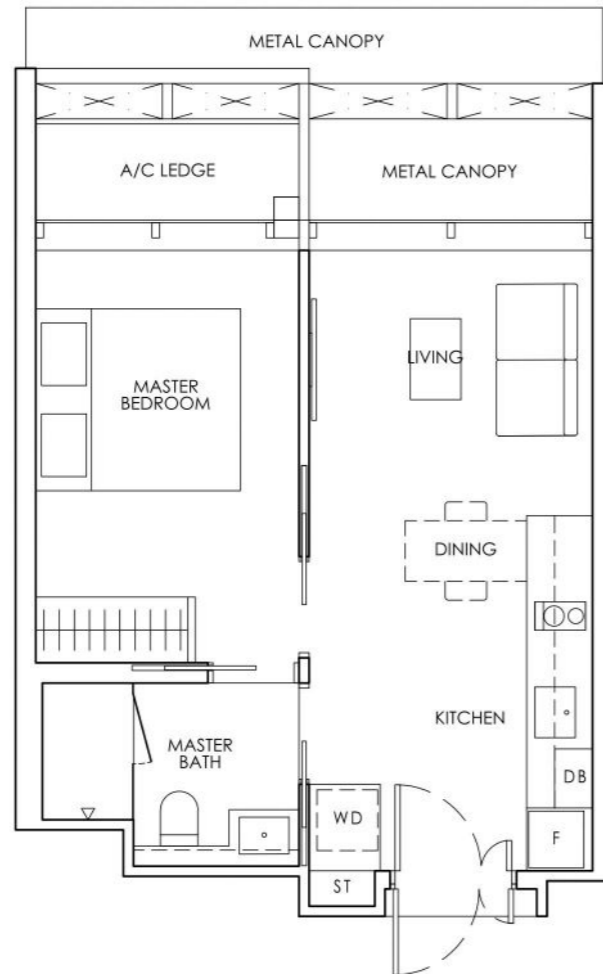


# 1-BEDROOM

**Type A1**  
40 sq m / 431 sq ft

#23-08 to #33-08  
#37-08 to #38-08



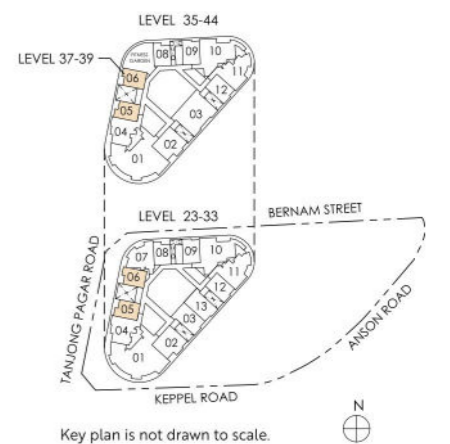
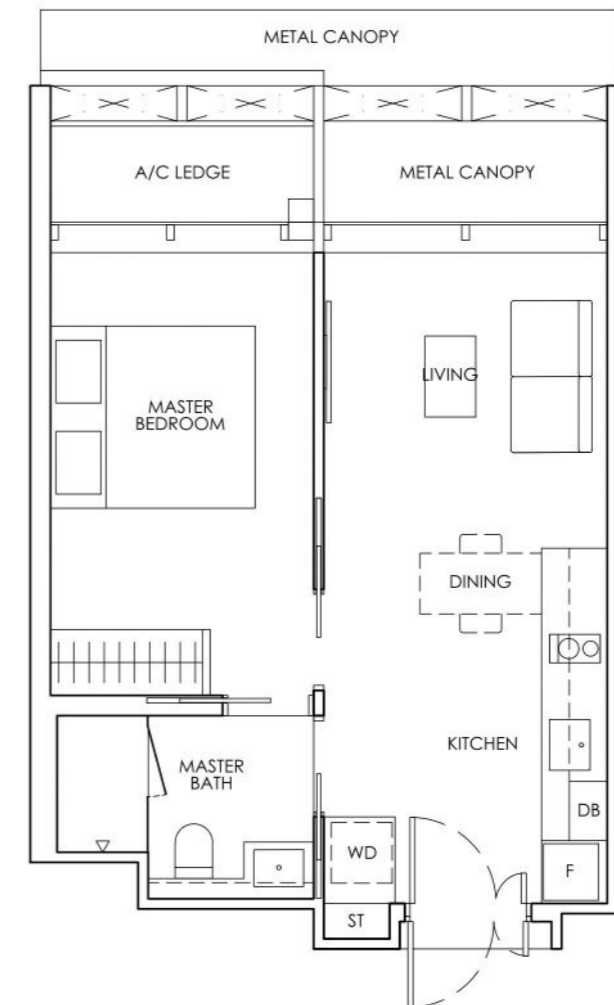
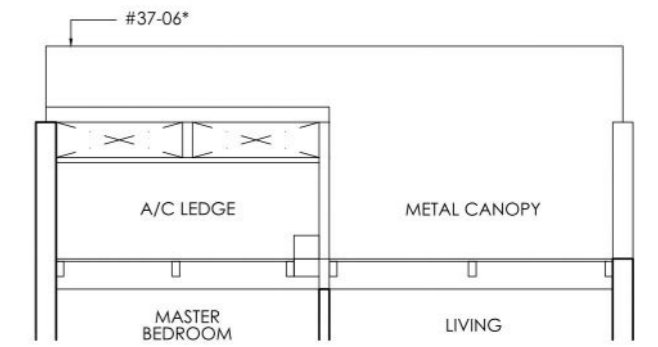
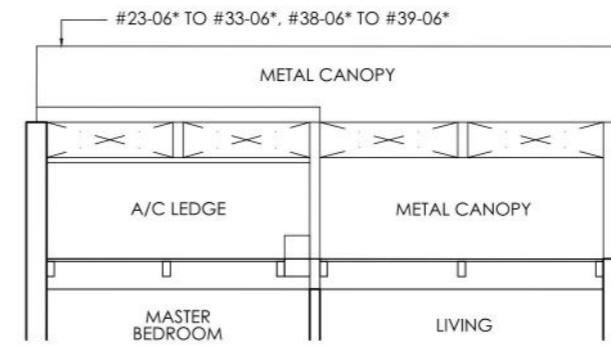
**Legend (where applicable)**  
**DB** Distribution Board    **WD** Washer cum Dryer    **W/D** Washer and Dryer    **F** Fridge    **WC** Water Closet  
**ST** Storage    **HS** Household Shelter    **A/C** Air-Conditioner    **•** Mirror Image

Strata area includes air-conditioner (A/C) ledge, balcony and strata void where applicable. Metal canopy is not included in the strata area. All floor plans, areas and measurements stated herein are approximate only and are subject to final survey. Please refer to the key plan for orientation. The plans are subject to change as may be approved by the relevant authorities. The balcony shall not be enclosed unless with the approved balcony screen. For an illustration of the approved balcony screen, please refer to the diagram annexed hereto as "Annexure I".

# 1-BEDROOM

**Type A2**  
42 sq m / 452 sq ft

#23-05 to #33-05  
#35-05 to #44-05  
#23-06\* to #33-06\*  
#37-06\* to #39-06\*



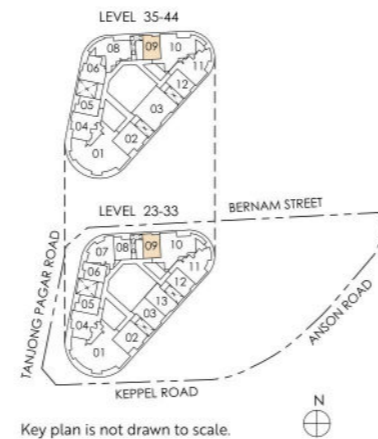
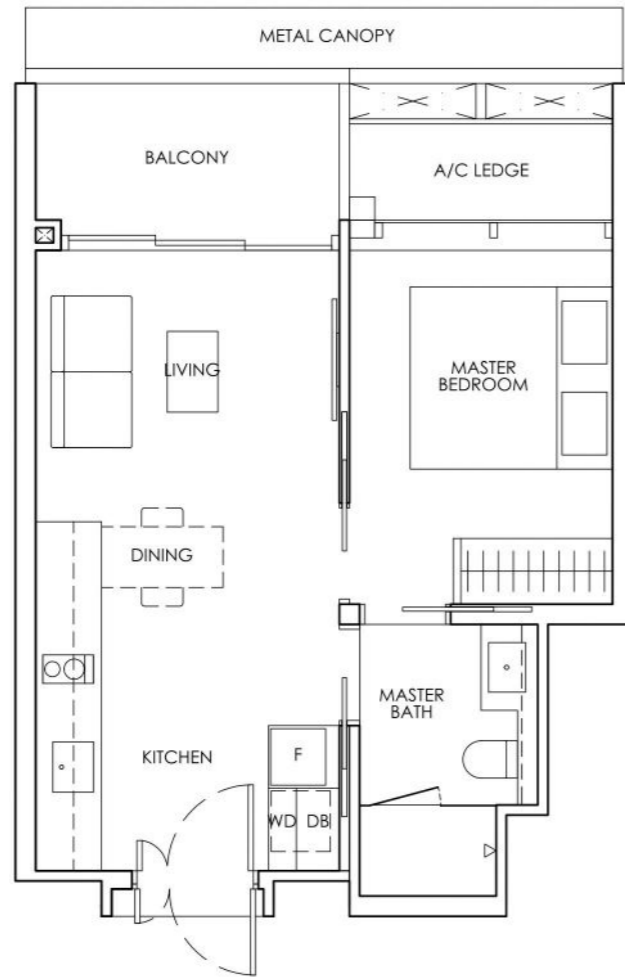
**Legend (where applicable)**  
**DB** Distribution Board    **WD** Washer cum Dryer    **W/D** Washer and Dryer    **F** Fridge    **WC** Water Closet  
**ST** Storage    **HS** Household Shelter    **A/C** Air-Conditioner    **•** Mirror Image

Strata area includes air-conditioner (A/C) ledge, balcony and strata void where applicable. Metal canopy is not included in the strata area. All floor plans, areas and measurements stated herein are approximate only and are subject to final survey. Please refer to the key plan for orientation. The plans are subject to change as may be approved by the relevant authorities. The balcony shall not be enclosed unless with the approved balcony screen. For an illustration of the approved balcony screen, please refer to the diagram annexed hereto as "Annexure I".

# 1-BEDROOM

**Type A3**  
44 sq m / 474 sq ft

#23-09 to #33-09  
#35-09 to #44-09



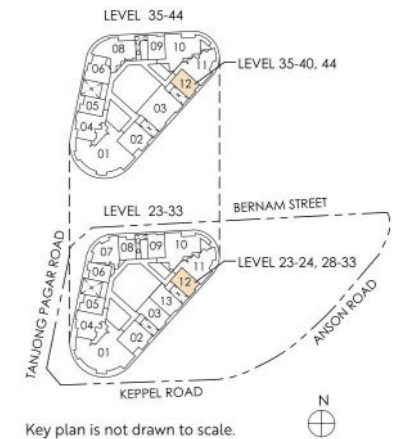
**Legend (where applicable)**  
**DB** Distribution Board  
**ST** Storage  
**WD** Washer cum Dryer  
**HS** Household Shelter  
**W/D** Washer and Dryer  
**A/C** Air-Conditioner  
**F** Fridge  
**•** Mirror Image  
**WC** Water Closet

Strata area includes air-conditioner (A/C) ledge, balcony and strata void where applicable. Metal canopy is not included in the strata area. All floor plans, areas and measurements stated herein are approximate only and are subject to final survey. Please refer to the key plan for orientation. The plans are subject to change as may be approved by the relevant authorities. The balcony shall not be enclosed unless with the approved balcony screen. For an illustration of the approved balcony screen, please refer to the diagram annexed hereto as "Annexure I".

# 1-BEDROOM

**Type A4**  
46 sq m / 495 sq ft

#23-12 to #24-12  
#28-12 to #33-12  
#35-12 to #40-12  
#44-12



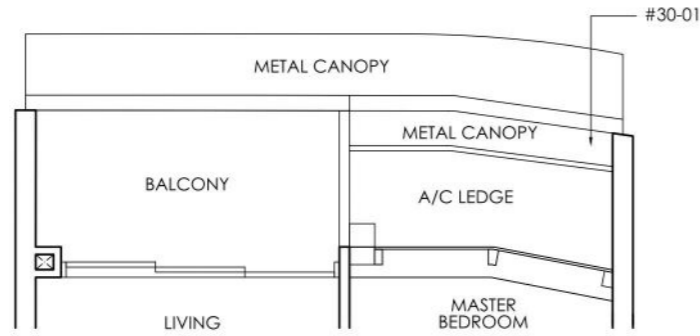
**Legend (where applicable)**  
**DB** Distribution Board  
**ST** Storage  
**WD** Washer cum Dryer  
**HS** Household Shelter  
**W/D** Washer and Dryer  
**A/C** Air-Conditioner  
**F** Fridge  
**•** Mirror Image  
**WC** Water Closet

Strata area includes air-conditioner (A/C) ledge, balcony and strata void where applicable. Metal canopy is not included in the strata area. All floor plans, areas and measurements stated herein are approximate only and are subject to final survey. Please refer to the key plan for orientation. The plans are subject to change as may be approved by the relevant authorities. The balcony shall not be enclosed unless with the approved balcony screen. For an illustration of the approved balcony screen, please refer to the diagram annexed hereto as "Annexure I".

# 1-BEDROOM

**Type A5**  
46 sq m / 495 sq ft

#30-01 to #31-01



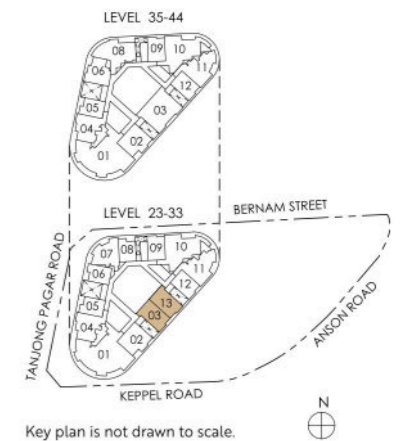
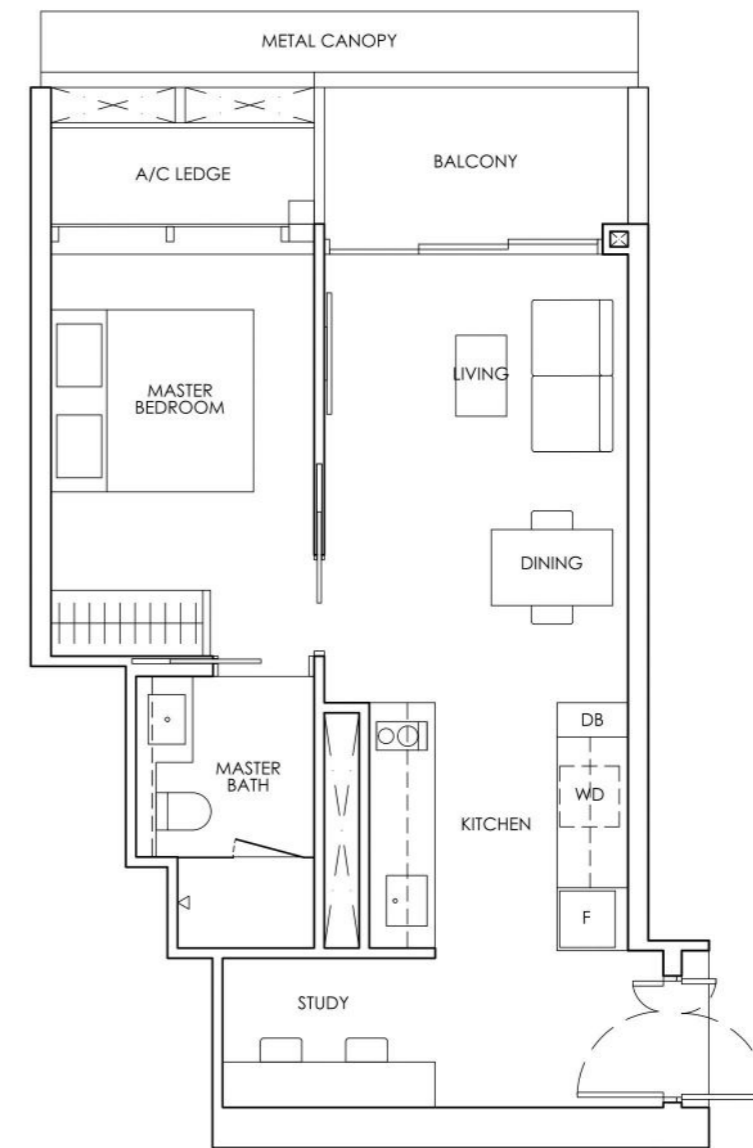
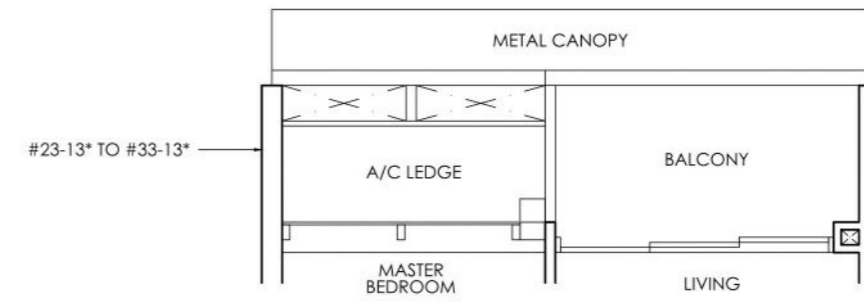
**Legend (where applicable)**  
**DB** Distribution Board  
**ST** Storage  
**WD** Washer cum Dryer  
**HS** Household Shelter  
**W/D** Washer and Dryer  
**A/C** Air-Conditioner  
**F** Fridge  
**WC** Water Closet  
**M** Mirror Image

Strata area includes air-conditioner (A/C) ledge, balcony and strata void where applicable. Metal canopy is not included in the strata area. All floor plans, areas and measurements stated herein are approximate only and are subject to final survey. Please refer to the key plan for orientation. The plans are subject to change as may be approved by the relevant authorities. The balcony shall not be enclosed unless with the approved balcony screen. For an illustration of the approved balcony screen, please refer to the diagram annexed hereto as "Annexure I".

# 1-BEDROOM + STUDY

**Type AS1**  
54 sq m / 581 sq ft

#23-03 to #33-03  
#23-13\* to #33-13\*



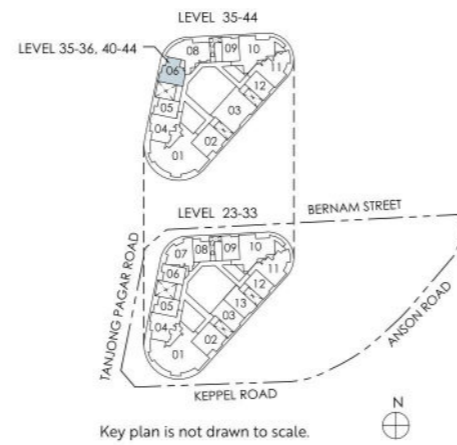
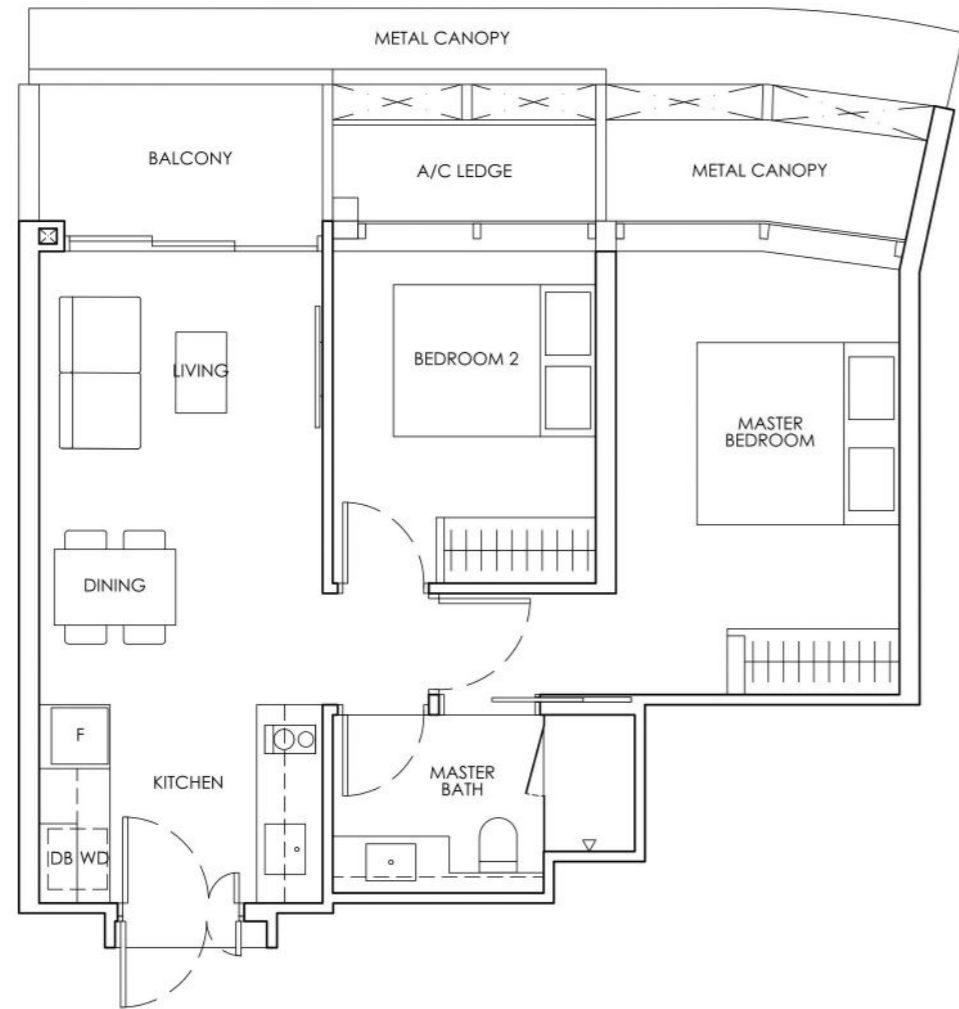
**Legend (where applicable)**  
**DB** Distribution Board  
**ST** Storage  
**WD** Washer cum Dryer  
**HS** Household Shelter  
**W/D** Washer and Dryer  
**A/C** Air-Conditioner  
**F** Fridge  
**WC** Water Closet  
**M** Mirror Image

Strata area includes air-conditioner (A/C) ledge, balcony and strata void where applicable. Metal canopy is not included in the strata area. All floor plans, areas and measurements stated herein are approximate only and are subject to final survey. Please refer to the key plan for orientation. The plans are subject to change as may be approved by the relevant authorities. The balcony shall not be enclosed unless with the approved balcony screen. For an illustration of the approved balcony screen, please refer to the diagram annexed hereto as "Annexure I".

# 2-BEDROOM

**Type B1**  
60 sq m / 646 sq ft

#35-06 to #36-06  
#40-06 to #44-06



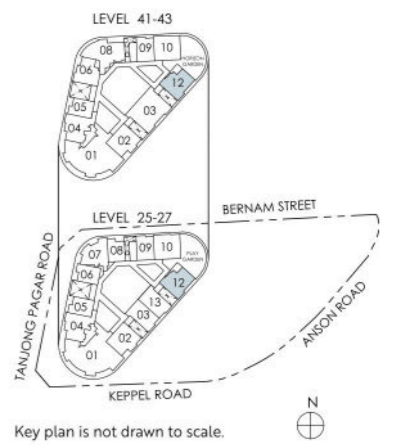
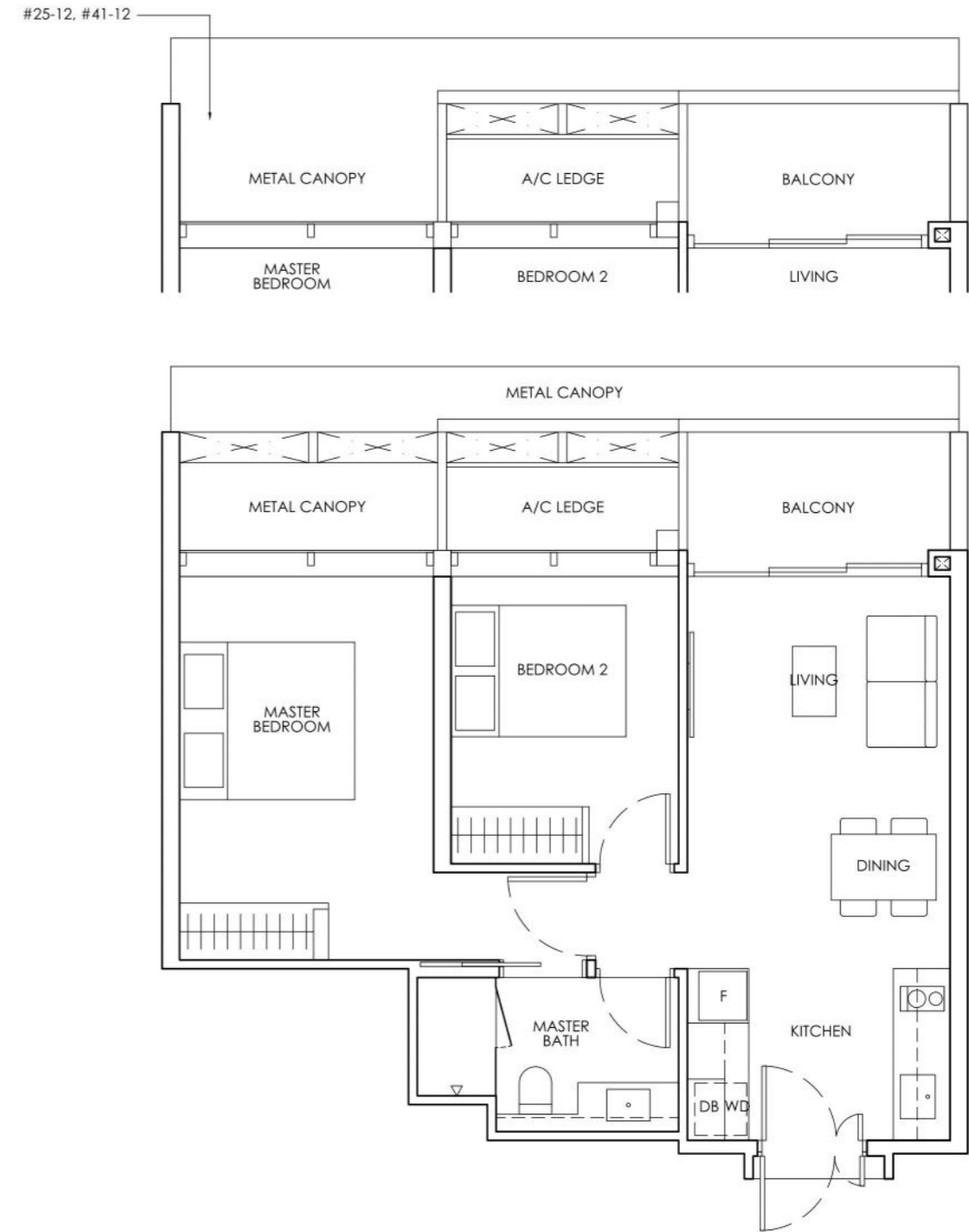
**Legend (where applicable)**  
**DB** Distribution Board    **WD** Washer cum Dryer    **W/D** Washer and Dryer    **F** Fridge    **WC** Water Closet  
**ST** Storage    **HS** Household Shelter    **A/C** Air-Conditioner    **M** Mirror Image

Strata area includes air-conditioner (A/C) ledge, balcony and strata void where applicable. Metal canopy is not included in the strata area. All floor plans, areas and measurements stated herein are approximate only and are subject to final survey. Please refer to the key plan for orientation. The plans are subject to change as may be approved by the relevant authorities. The balcony shall not be enclosed unless with the approved balcony screen. For an illustration of the approved balcony screen, please refer to the diagram annexed hereto as "Annexure I".

# 2-BEDROOM

**Type B2**  
63 sq m / 678 sq ft

#25-12 to #27-12  
#41-12 to #43-12



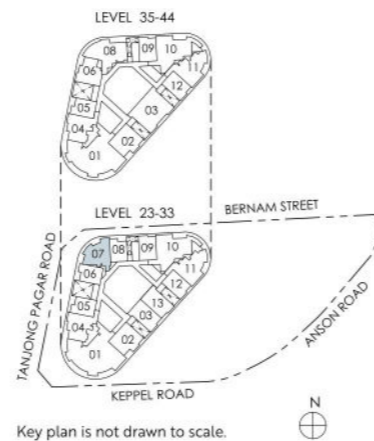
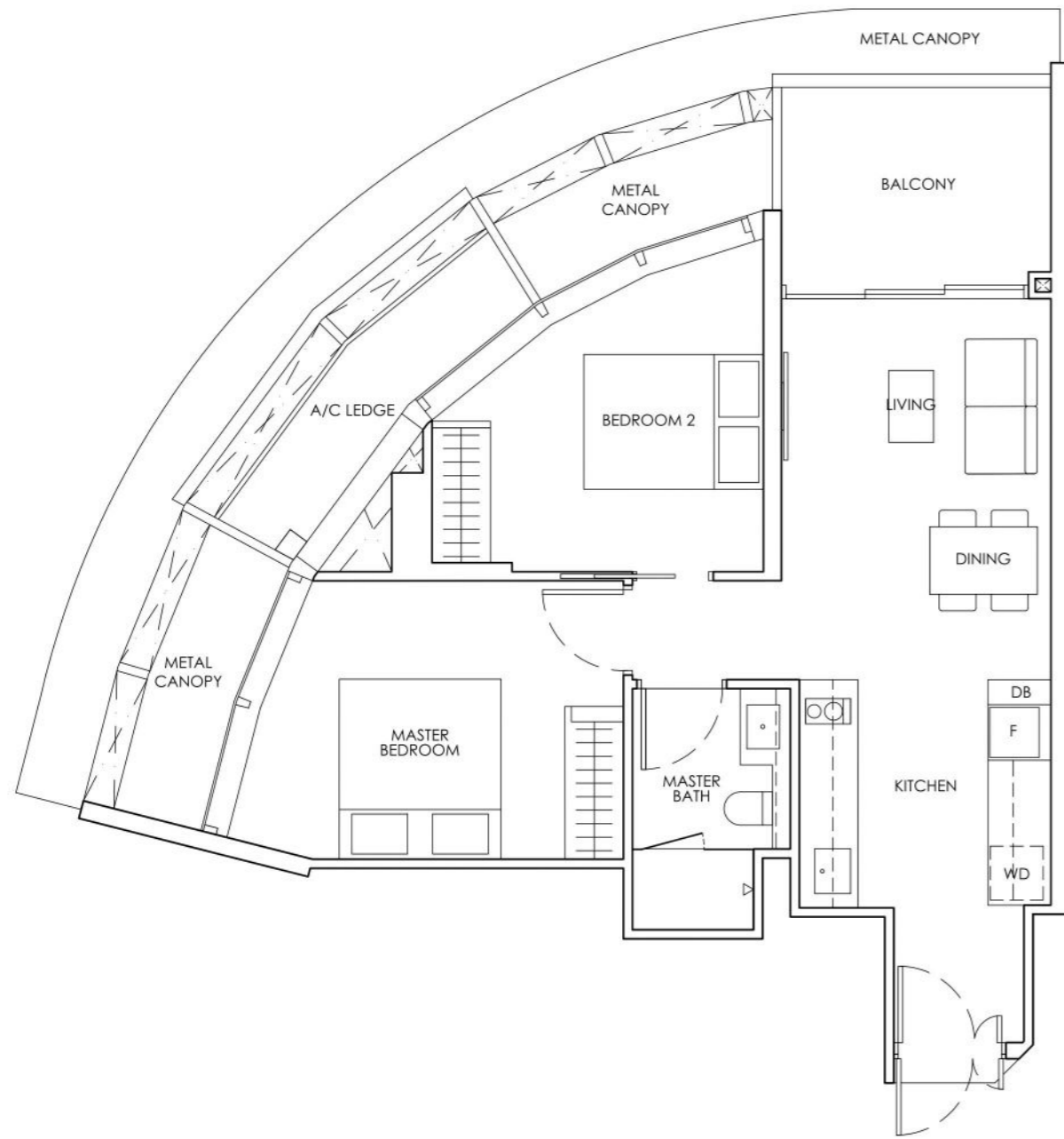
**Legend (where applicable)**  
**DB** Distribution Board    **WD** Washer cum Dryer    **W/D** Washer and Dryer    **F** Fridge    **WC** Water Closet  
**ST** Storage    **HS** Household Shelter    **A/C** Air-Conditioner    **M** Mirror Image

Strata area includes air-conditioner (A/C) ledge, balcony and strata void where applicable. Metal canopy is not included in the strata area. All floor plans, areas and measurements stated herein are approximate only and are subject to final survey. Please refer to the key plan for orientation. The plans are subject to change as may be approved by the relevant authorities. The balcony shall not be enclosed unless with the approved balcony screen. For an illustration of the approved balcony screen, please refer to the diagram annexed hereto as "Annexure I".

# 2-BEDROOM

**Type B3**  
70 sq m / 753 sq ft

#23-07 to #33-07



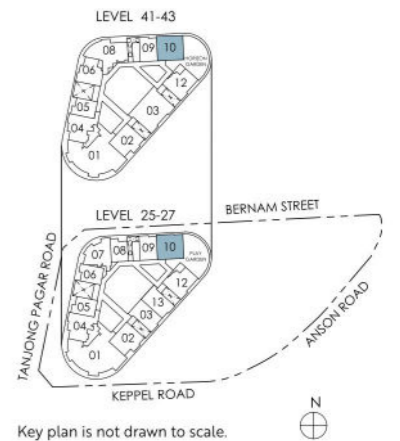
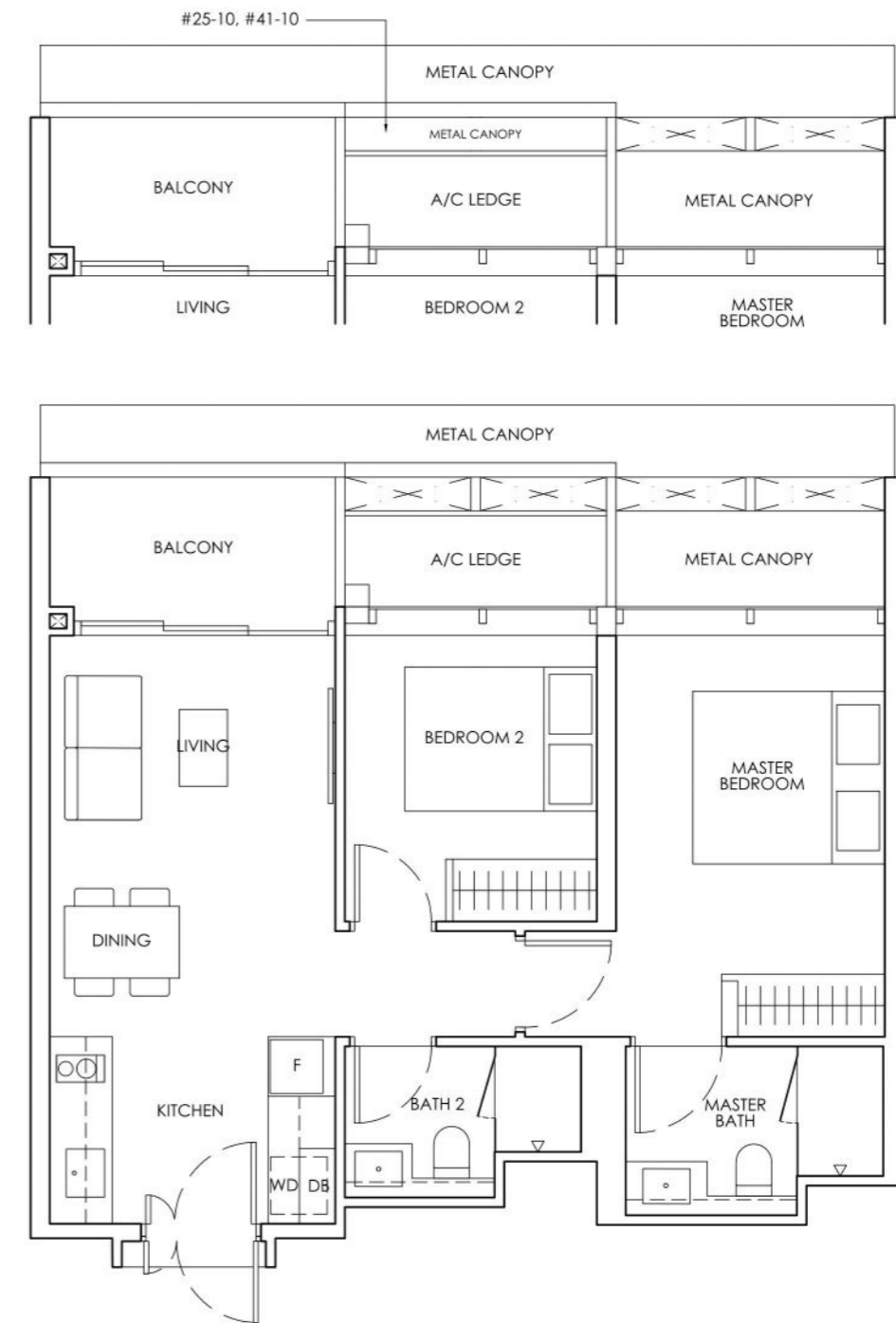
**Legend (where applicable)**  
**DB** Distribution Board    **WD** Washer cum Dryer    **W/D** Washer and Dryer    **F** Fridge    **WC** Water Closet  
**ST** Storage    **HS** Household Shelter    **A/C** Air-Conditioner    **M** Mirror Image

Strata area includes air-conditioner (A/C) ledge, balcony and strata void where applicable. Metal canopy is not included in the strata area. All floor plans, areas and measurements stated herein are approximate only and are subject to final survey. Please refer to the key plan for orientation. The plans are subject to change as may be approved by the relevant authorities. The balcony shall not be enclosed unless with the approved balcony screen. For an illustration of the approved balcony screen, please refer to the diagram annexed hereto as "Annexure I".

# 2-BEDROOM PREMIUM

**Type BPI**  
64 sq m / 689 sq ft

#25-10 to #27-10  
#41-10 to #43-10



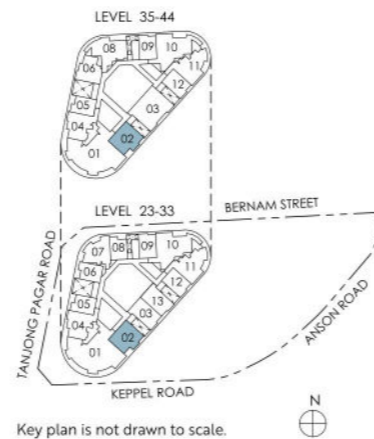
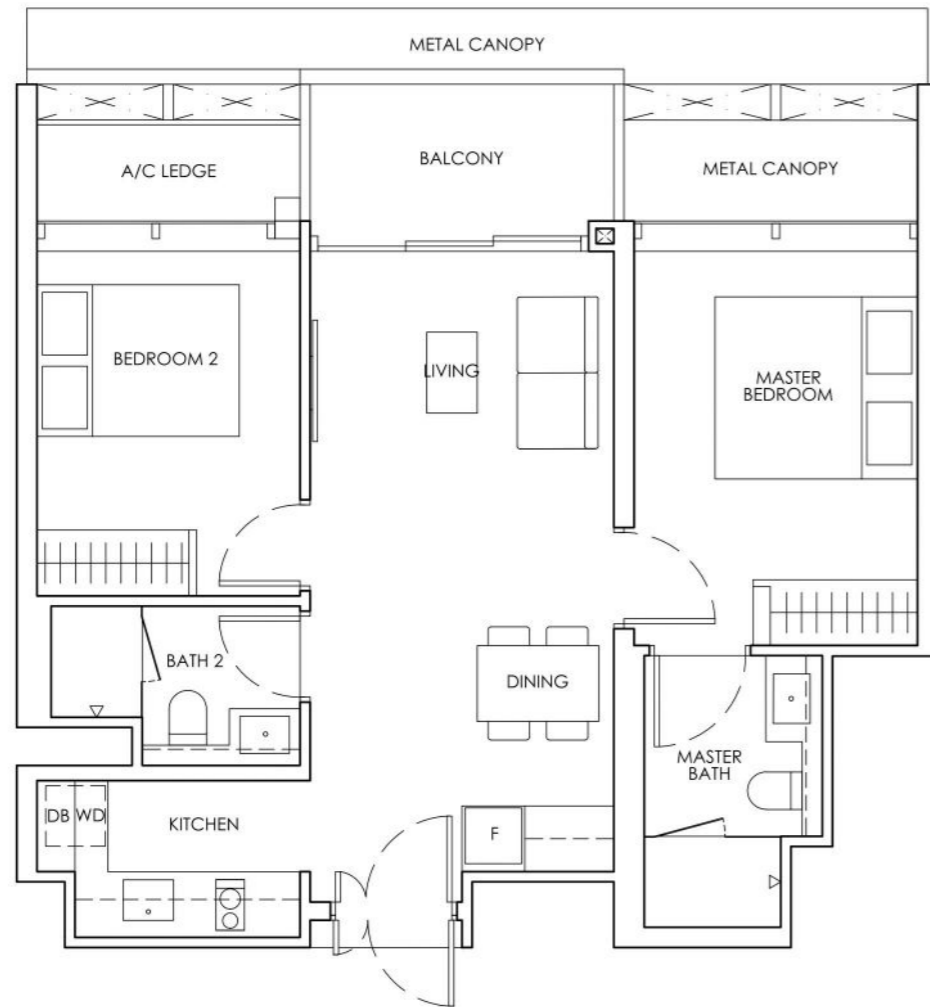
**Legend (where applicable)**  
**DB** Distribution Board    **WD** Washer cum Dryer    **W/D** Washer and Dryer    **F** Fridge    **WC** Water Closet  
**ST** Storage    **HS** Household Shelter    **A/C** Air-Conditioner    **M** Mirror Image

Strata area includes air-conditioner (A/C) ledge, balcony and strata void where applicable. Metal canopy is not included in the strata area. All floor plans, areas and measurements stated herein are approximate only and are subject to final survey. Please refer to the key plan for orientation. The plans are subject to change as may be approved by the relevant authorities. The balcony shall not be enclosed unless with the approved balcony screen. For an illustration of the approved balcony screen, please refer to the diagram annexed hereto as "Annexure I".

# 2-BEDROOM PREMIUM

**Type BP2**  
66 sq m / 710 sq ft

#23-02 to #33-02  
#35-02 to #44-02



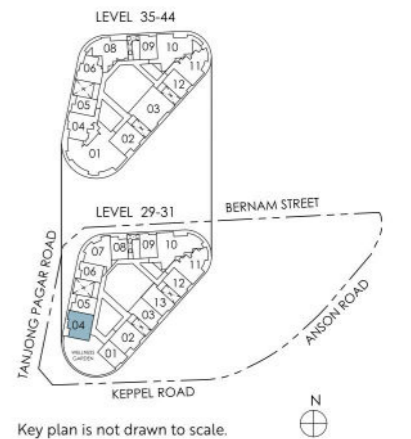
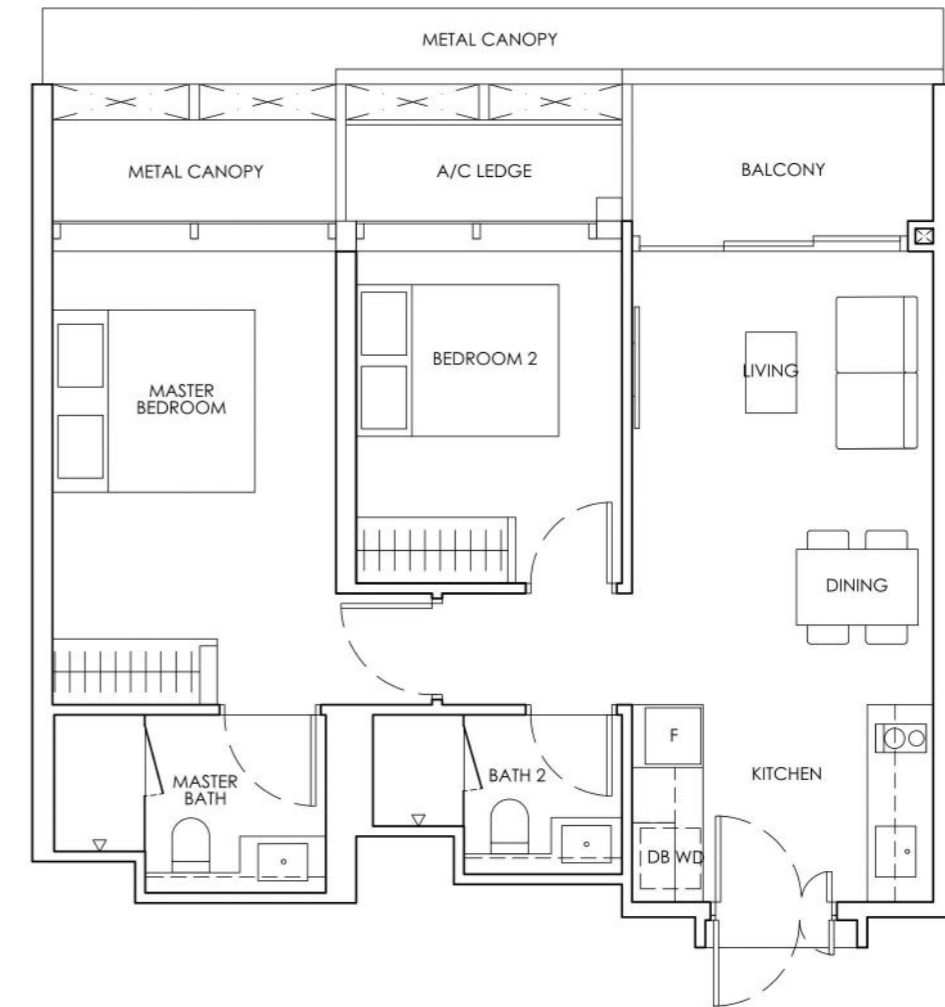
**Legend (where applicable)**  
**DB** Distribution Board  
**ST** Storage  
**WD** Washer cum Dryer  
**HS** Household Shelter  
**W/D** Washer and Dryer  
**A/C** Air-Conditioner  
**F** Fridge  
**M** Mirror Image  
**WC** Water Closet

Strata area includes air-conditioner (A/C) ledge, balcony and strata void where applicable. Metal canopy is not included in the strata area. All floor plans, areas and measurements stated herein are approximate only and are subject to final survey. Please refer to the key plan for orientation. The plans are subject to change as may be approved by the relevant authorities. The balcony shall not be enclosed unless with the approved balcony screen. For an illustration of the approved balcony screen, please refer to the diagram annexed hereto as "Annexure I".

# 2-BEDROOM PREMIUM

**Type BP3**  
66 sq m / 710 sq ft

#29-04 to #31-04



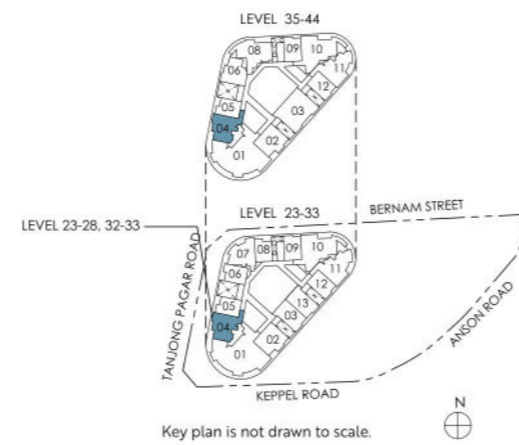
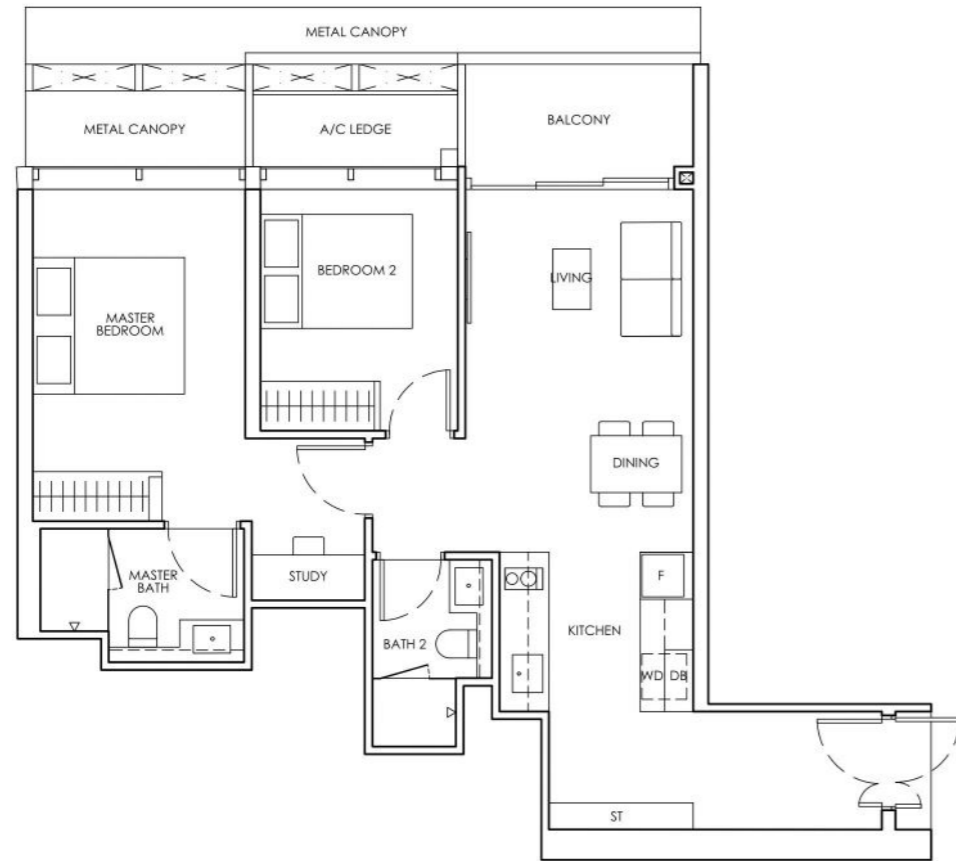
**Legend (where applicable)**  
**DB** Distribution Board  
**ST** Storage  
**WD** Washer cum Dryer  
**HS** Household Shelter  
**W/D** Washer and Dryer  
**A/C** Air-Conditioner  
**F** Fridge  
**M** Mirror Image  
**WC** Water Closet

Strata area includes air-conditioner (A/C) ledge, balcony and strata void where applicable. Metal canopy is not included in the strata area. All floor plans, areas and measurements stated herein are approximate only and are subject to final survey. Please refer to the key plan for orientation. The plans are subject to change as may be approved by the relevant authorities. The balcony shall not be enclosed unless with the approved balcony screen. For an illustration of the approved balcony screen, please refer to the diagram annexed hereto as "Annexure I".

# 2-BEDROOM PREMIUM + ENSUITE STUDY

**Type BPS1**  
76 sq m / 818 sq ft

#23-04 to #28-04  
#32-04 to #33-04  
#35-04 to #44-04



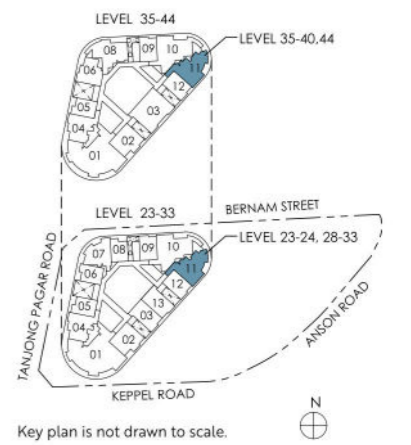
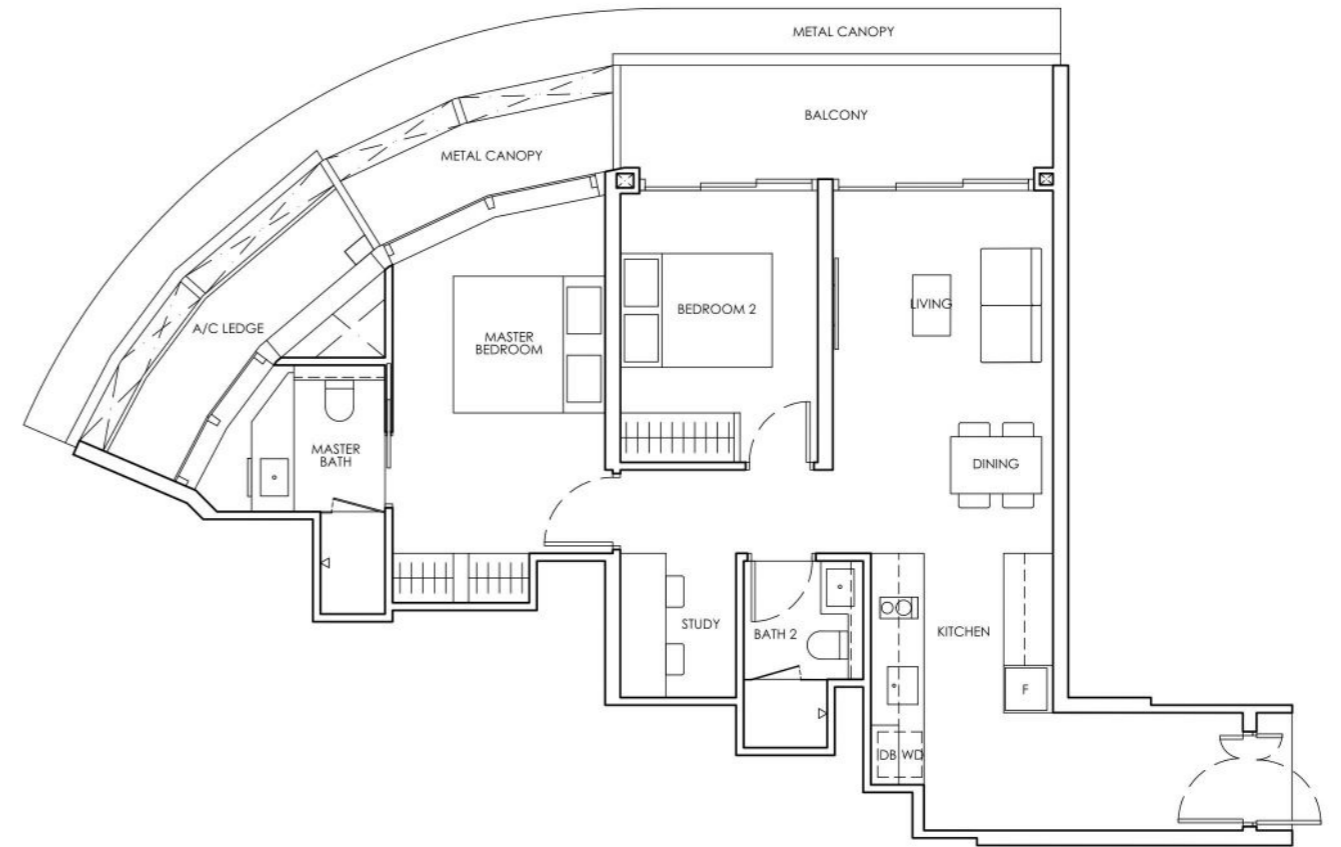
**Legend (where applicable)**  
**DB** Distribution Board    **WD** Washer cum Dryer    **W/D** Washer and Dryer    **F** Fridge    **WC** Water Closet  
**ST** Storage    **HS** Household Shelter    **A/C** Air-Conditioner    **\*** Mirror Image

Strata area includes air-conditioner (A/C) ledge, balcony and strata void where applicable. Metal canopy is not included in the strata area. All floor plans, areas and measurements stated herein are approximate only and are subject to final survey. Please refer to the key plan for orientation. The plans are subject to change as may be approved by the relevant authorities. The balcony shall not be enclosed unless with the approved balcony screen. For an illustration of the approved balcony screen, please refer to the diagram annexed hereto as "Annexure I".

# 2-BEDROOM PREMIUM + STUDY

**Type BPS2**  
86 sq m / 926 sq ft

#23-11 to #24-11  
#28-11 to #33-11  
#35-11 to #40-11  
#44-11



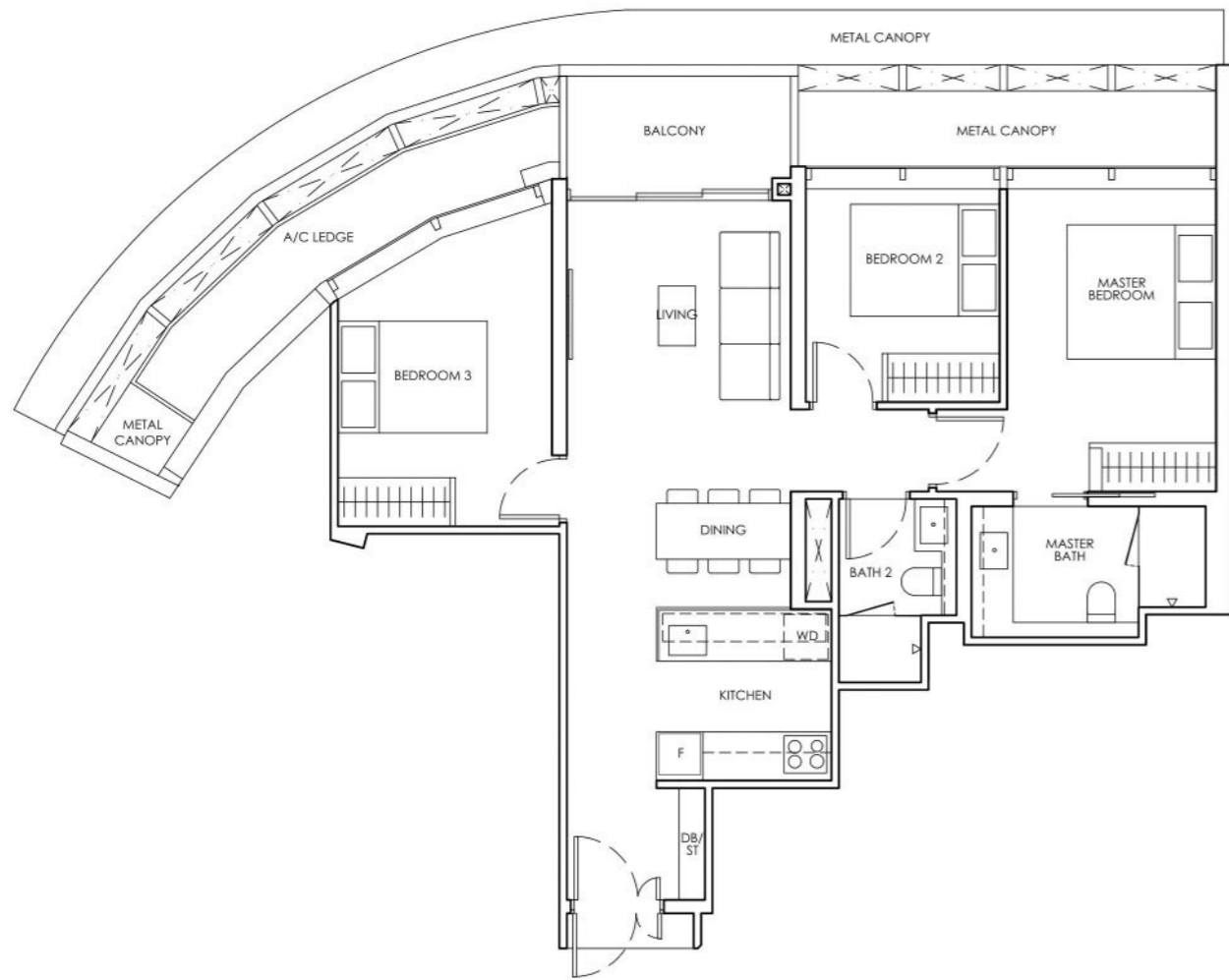
**Legend (where applicable)**  
**DB** Distribution Board    **WD** Washer cum Dryer    **W/D** Washer and Dryer    **F** Fridge    **WC** Water Closet  
**ST** Storage    **HS** Household Shelter    **A/C** Air-Conditioner    **\*** Mirror Image

Strata area includes air-conditioner (A/C) ledge, balcony and strata void where applicable. Metal canopy is not included in the strata area. All floor plans, areas and measurements stated herein are approximate only and are subject to final survey. Please refer to the key plan for orientation. The plans are subject to change as may be approved by the relevant authorities. The balcony shall not be enclosed unless with the approved balcony screen. For an illustration of the approved balcony screen, please refer to the diagram annexed hereto as "Annexure I".

# 3-BEDROOM

**Type C1**  
91 sq m / 980 sq ft

#35-08 to #36-08  
#40-08 to #44-08



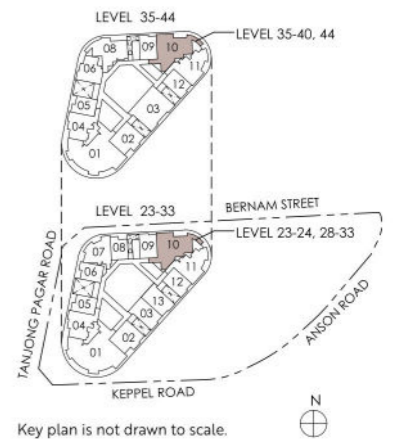
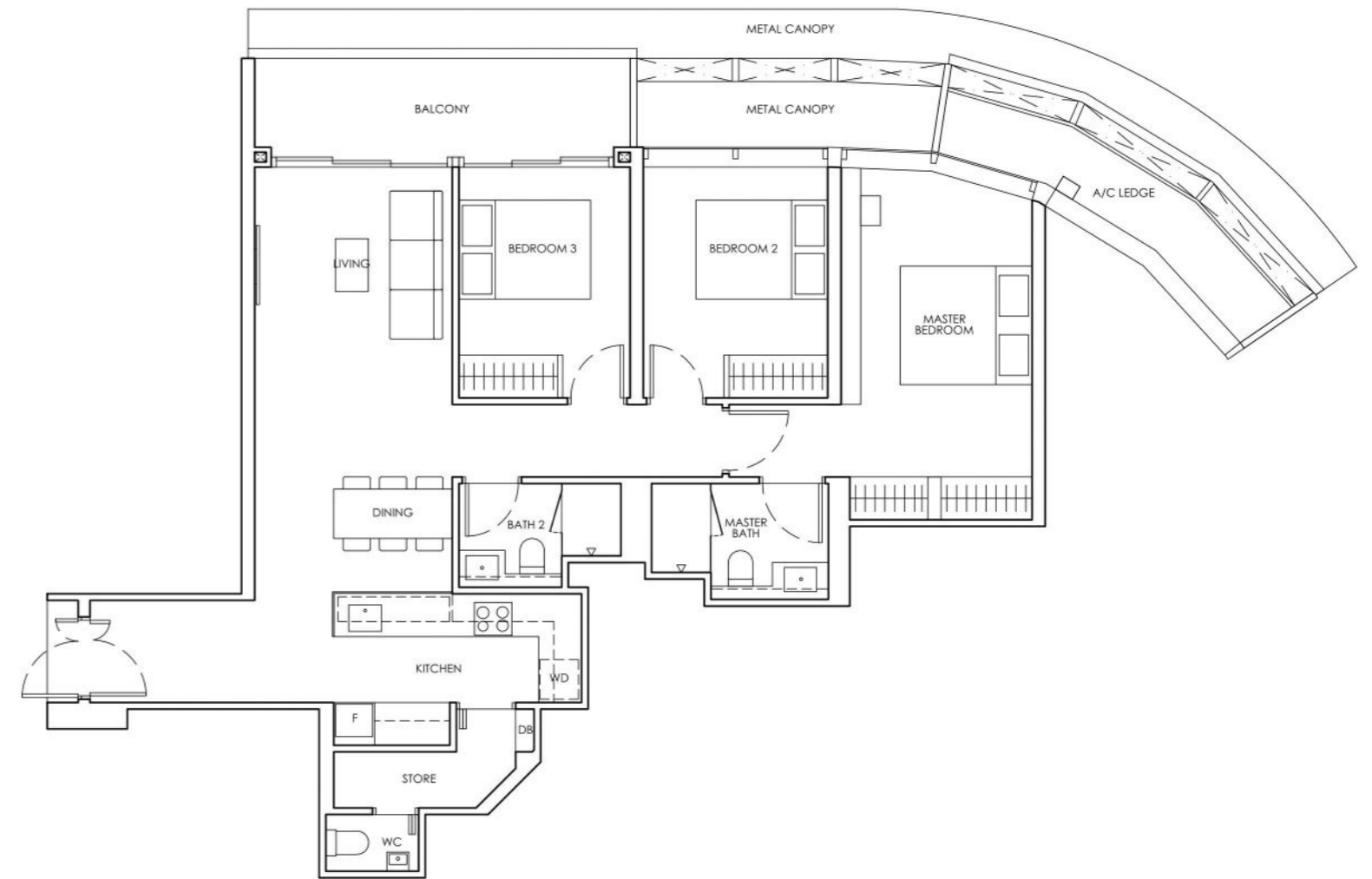
**Legend (where applicable)**  
**DB** Distribution Board    **WD** Washer cum Dryer    **W/D** Washer and Dryer    **F** Fridge    **WC** Water Closet  
**ST** Storage    **HS** Household Shelter    **A/C** Air-Conditioner    **\*** Mirror Image

Strata area includes air-conditioner (A/C) ledge, balcony and strata void where applicable. Metal canopy is not included in the strata area. All floor plans, areas and measurements stated herein are approximate only and are subject to final survey. Please refer to the key plan for orientation. The plans are subject to change as may be approved by the relevant authorities. The balcony shall not be enclosed unless with the approved balcony screen. For an illustration of the approved balcony screen, please refer to the diagram annexed hereto as "Annexure I".

# 3-BEDROOM PREMIUM

**Type CPI**  
112 sq m / 1206 sq ft

#23-10 to #24-10  
#28-10 to #33-10  
#35-10 to #40-10  
#44-10



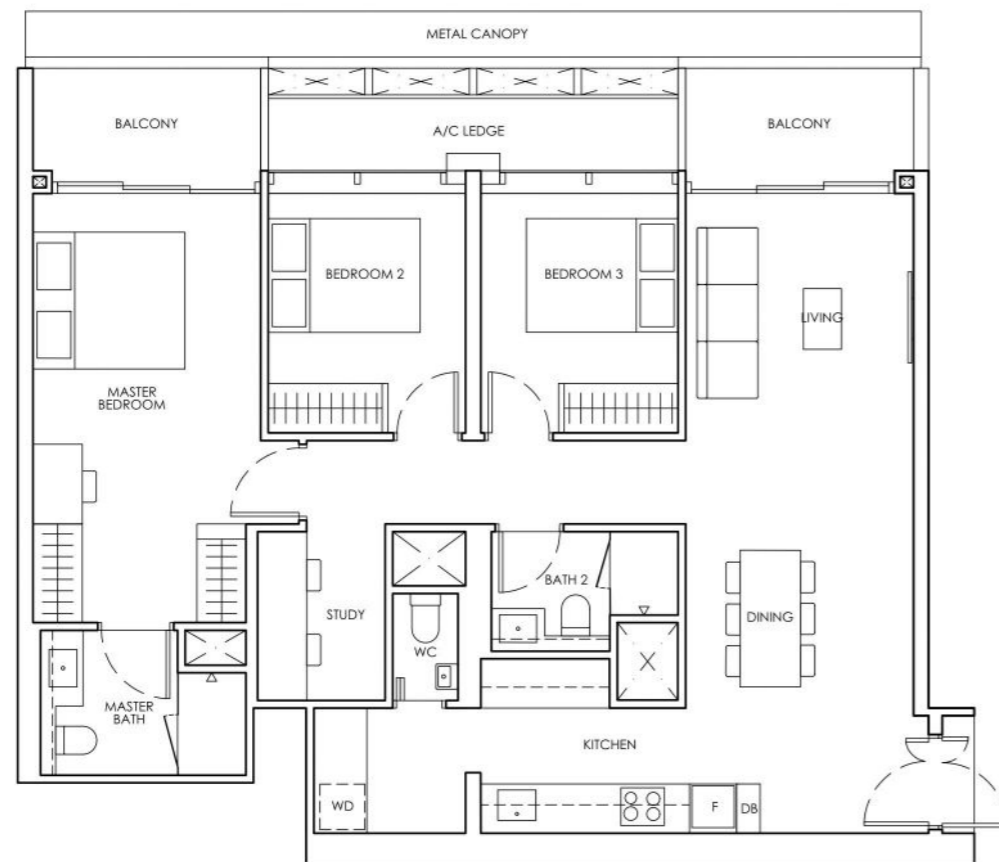
**Legend (where applicable)**  
**DB** Distribution Board    **WD** Washer cum Dryer    **W/D** Washer and Dryer    **F** Fridge    **WC** Water Closet  
**ST** Storage    **HS** Household Shelter    **A/C** Air-Conditioner    **\*** Mirror Image

Strata area includes air-conditioner (A/C) ledge, balcony and strata void where applicable. Metal canopy is not included in the strata area. All floor plans, areas and measurements stated herein are approximate only and are subject to final survey. Please refer to the key plan for orientation. The plans are subject to change as may be approved by the relevant authorities. The balcony shall not be enclosed unless with the approved balcony screen. For an illustration of the approved balcony screen, please refer to the diagram annexed hereto as "Annexure I".

# 3-BEDROOM PREMIUM + STUDY

**Type CPS1**  
114 sq m / 1227 sq ft

#35-03 to #44-03



**Legend (where applicable)**  
**DB** Distribution Board    **WD** Washer cum Dryer    **W/D** Washer and Dryer    **F** Fridge    **WC** Water Closet  
**ST** Storage    **HS** Household Shelter    **A/C** Air-Conditioner    **M** Mirror Image

Strata area includes air-conditioner (A/C) ledge, balcony and strata void where applicable. Metal canopy is not included in the strata area. All floor plans, areas and measurements stated herein are approximate only and are subject to final survey. Please refer to the key plan for orientation. The plans are subject to change as may be approved by the relevant authorities. The balcony shall not be enclosed unless with the approved balcony screen. For an illustration of the approved balcony screen, please refer to the diagram annexed hereto as "Annexure I".



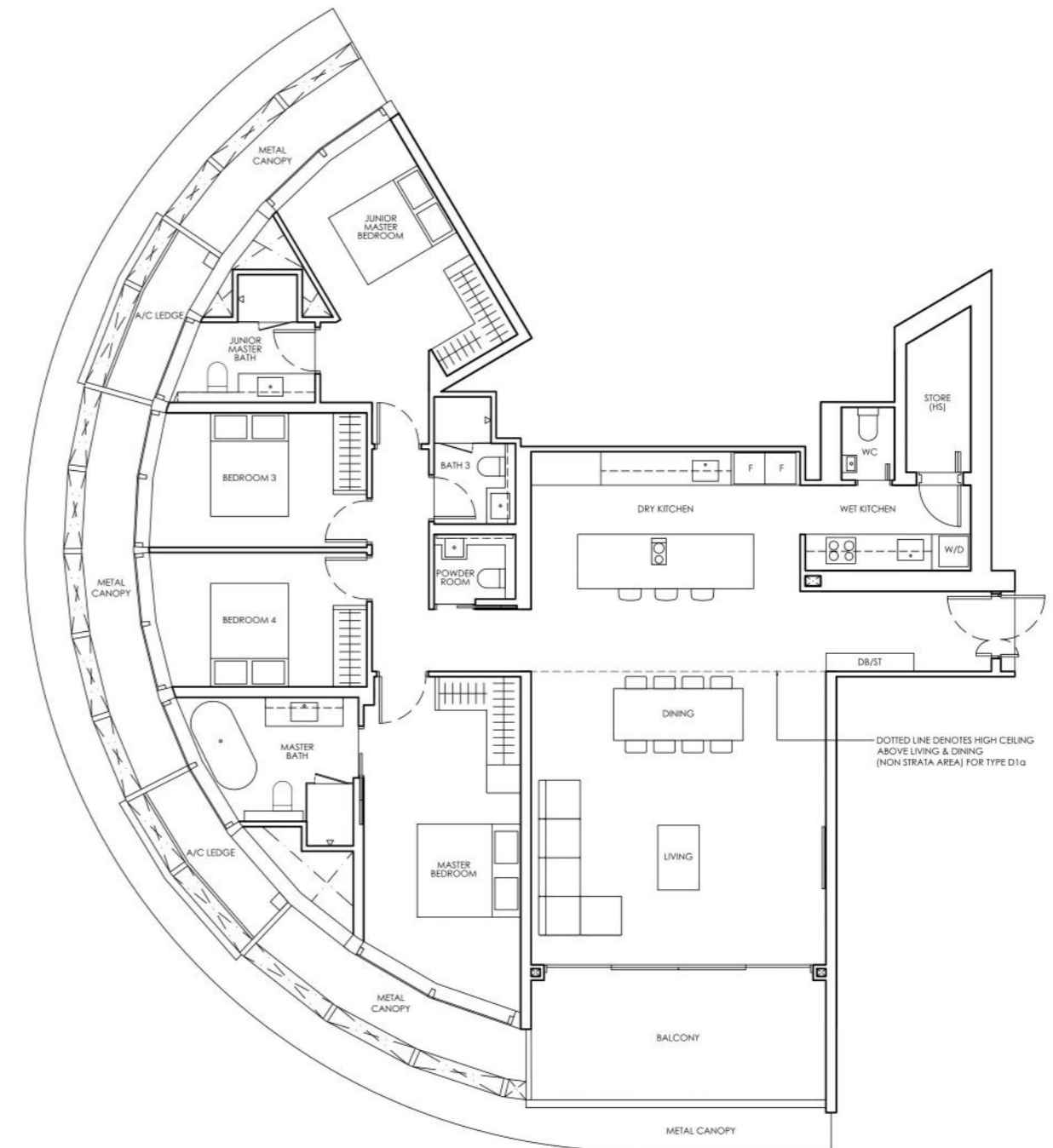
# 4-BEDROOM PREMIUM

**Type D1**  
192 sq m / 2067 sq ft

#23-01 to #27-01  
#32-01 to #33-01  
#35-01 to #44-01

**Type D1a**  
192 sq m / 2067 sq ft

#28-01



**Legend (where applicable)**  
**DB** Distribution Board    **WD** Washer cum Dryer    **W/D** Washer and Dryer    **F** Fridge    **WC** Water Closet  
**ST** Storage    **HS** Household Shelter    **A/C** Air-Conditioner    **M** Mirror Image

Strata area includes air-conditioner (A/C) ledge, balcony and strata void where applicable. Metal canopy is not included in the strata area. All floor plans, areas and measurements stated herein are approximate only and are subject to final survey. Please refer to the key plan for orientation. The plans are subject to change as may be approved by the relevant authorities. The balcony shall not be enclosed unless with the approved balcony screen. For an illustration of the approved balcony screen, please refer to the diagram annexed hereto as "Annexure I".

